

# The Global **NEW LIGHT** of MYANMAR

## Four Objectives of the National Defence and Security Council

1. To steadfastly strive for emergence of political forces and the people's representatives who can implement a genuine, disciplined multi-party democratic system while constantly emphasizing on the national interests of the State.
2. To persistently strive for promoting the socio-economic life of the people through the development of agro-based industries in improving the agricultural sector, the vital foundation of the economic growth of the State.
3. To put emphasis on enhancing the national education and health sectors for sustainable development of the State.
4. To implement multi-party democratic system, with the participation of the people, to ensure the success of multi-party democratic general election process and successfully moving towards with the multi-party democratic system aspired by the entire people.

### ARTICLE

Hydropower to Dispel Darkness and Provide Light for the Nation in the Future

By Lin Lin **PAGE 8-9**

### NATIONAL **PAGE 6**



Novotel to host Study Abroad Beyond Education, Migration and Scholarship Fair 2026

### NATIONAL **PAGE 7**



80 Myanmar women workers granted OWIC and overseas job training

## 30-day fisheries research launched off Taninthayi coast by SEAFDEC research vessel



MV SEAFDEC 2 of Southeast Asian Fisheries Development Centre (SEAFDEC), which carries out fisheries research in the Myanmar waters off the Taninthayi coast, is seen at Pyae Phyo Tun Jetty in Pathet Village, Kyunsu Township, on 21 February 2026. **PHOTO: KHAING HTOO (IPRD)**

**A** 30-day fisheries research programme will be carried out in the waters off the Taninthayi coast using MV SEAFDEC 2 of Southeast Asian

Fisheries Development Centre (SEAFDEC).

The initiative aims to conduct scientific studies on fish stocks and the marine ecological conditions in which they inhabit

along the Taninthayi coast, to support fisheries resource management, and to ensure the long-term sustainability of fishery resources in Myanmar waters.

The opening ceremony for

the research operations was held at on 21 February at Pyae Phyo Tun Jetty in Pathet Village, Kyunsu Township. At the ceremony, U Maung Gyi, Minister for

**SEE PAGE 5**



## Hlawga Park invites visitors who want to enjoy camping vibe in early summer

THE natural park, Hlawga has invited visitors who want to enjoy full camping vibe in early summer to join its excited activities.

It said it is the best time for camping at the park and visitors can feel the summer breeze and take photo record of the peaceful moment. In addition, visitors can have fresh breath while go walking or biking along the forest tracks, or take

rest with beloved family or friends while playing guitar, singing or playing games. With Hlawga's Lal Taw (paddy field) menu, visitors can enjoy the natural scenery while having lunch together with friends, it added. The zoo is open daily from 8 am to 5 pm and booking can be made during office hours by calling the phone numbers 09-429998624 and 09-423104231. — MT/ZS

Hlawga Park has advertised camping activities.

# NATIONAL

## Educated human resources must drive development efforts

❖ It is necessary to have an abundant and capable pool of human resources who can serve the duties for regional development. The educated and skilled individuals emerging from the region must be capable of actively promoting progress in the social, economic, administrative, and agricultural sectors of the relevant regions.

*(An excerpt from the speech delivered by State Administration Council Chairman, Prime Minister, Senior General Min Aung Hlaing at the meeting with state-level departmental officials and town elders in Kengtung of Shan State (East) to talk about regional development measures on 24 May 2025)*

- **Let us encourage production for prosperity of the Nation.**
- **Let us ensure education sector for the development of the Nation.**
- **Let us protect our environment for the prosperity of the Nation.**

### Objectives of 81<sup>st</sup> Armed Forces Day

- (a) To participate in national politics in a leadership role of the country, not to deviate from the path of democracy in accordance with the fundamental principles of the Constitution, safeguarding the national policy, the Three Main National Causes
- (b) To cooperate with the government and people in performing measures for State stability, ethnic unity and the nation's development
- (c) To act with utmost care based on the agreements of NCA without deviating from the Three Main National Causes while serving duties for durable peace, as the resolution of armed conflicts play key role in moving toward a genuine and disciplined multiparty democratic pathway
- (d) To continuously improve three main tasks of Tatmadaw – Study, Practise, Comply and the ability to apply modern technologies in structuring Tatmadaw into a Standard Army

### Statement of Myanmar Journalists Association (Central)

21 February 2026

IT has been reported that an ATR-72-600 passenger aircraft operated by Myanmar National Airlines (MNA), scheduled to depart from Myitkyina Airport to Mandalay, was attacked with drones in a terrorist strike by KIA and PDF terrorist groups at around 8 pm on 20 February 2026.

The terrorist act of attacking a passenger aircraft carrying innocent civilians is completely unacceptable. Thus, the Myanmar Journalists Association (Central) hereby declares that it absolutely does not accept this act and strongly condemns it.

*Myanmar Journalists Association (Central)*

## Well Marked Low-Pressure Area Condition

Issued at 4 pm MST on 22 February 2026

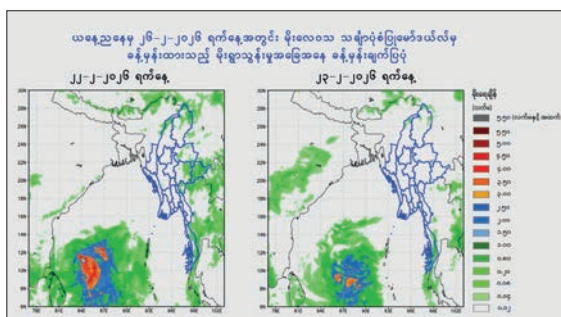
ACCORDING to the observations at 3:30 pm MST today, the well marked low-pressure area over Southwest Bay of Bengal still persists. It is likely continue to move West-Northwest during next 48 hours.

Due to the Well Marked Low-Pressure Area, rain or thundershowers will be isolated to scattered in Nay Pyi Taw, Yangon, Mandalay, Bago, Magway, Ayeyawady and Taninthayi regions and Kayin, Mon and Rakhine states and fairly widespread in Kayah and (southern and eastern) Shan states

from this evening to 22 February 2026.

#### Advisory

People should be aware of the natural disasters such as the untimely rainfall with strong wind, thunder, lightning strike, lightning, hails, flash flood and landslides in hilly areas and near small rivers and to make necessary preparations for inland water transport, domestic flights and irrigation dams. — DMH



## Myanmar Daily Weather Report

(Issued at 7 pm Sunday 22 February 2026)

**BAY INFERENCE:** According to the observations at 5:30 pm MST today, the low-pressure area over the Equatorial Indian Ocean and adjoining Southeast Bay of Bengal has moved west-northwestwards and intensified into a Well Marked Low-Pressure Area and reached over the Southwest Bay of Bengal. It is likely continue to move west-northwest during next 48 hours. Weather is a few clouds over the South Andaman Sea and the North Bay of Bengal and partly cloudy to cloudy over the North Andaman Sea and elsewhere over the Bay of Bengal.

**FORECAST VALID UNTIL NOON OF 23 February 2026:** Rain or thundershowers will be fairly widespread in Kayah and (southern and eastern)Shan states, scattered in Nay Pyi Taw, Yangon, Bago, upper Sagaing and Ayeyawady regions Kachin, Kayin and Mon states and isolated in Mandalay, Magway and Taninthayi regions and Rakhine and northern Shan states. Degree of certainty is 80 per cent. Weather will be partly cloudy in lower Sagaing Region and Chin State.

**THE CONDITION OF CUMULONIMBUS CLOUD:** The cumulonimbus clouds are developing in upper Sagaing Region and Kachin and Shan states. The area along the cumulonimbus clouds movement, the weather phenomena such as strong winds accompanied with rain, thunder, lightning and hail may occur and therefore it is recommended to be aware in advance of these phenomena.

**STATE OF THE SEA:** Sea will be slight to moderate in the Myanmar waters. Wave height will be about four to six feet off and along the Myanmar Coasts.

**OUTLOOK FOR SUBSEQUENT TWO DAYS:** Likelihood of isolated to scattered rain or thundershowers in Nay Pyi Taw, Yangon, Bago, Ayeyawady and Taninthayi regions and Kayah, Kayin, Mon and (southern and eastern) Shan states.

**FORECAST FOR NAY PYI TAW AND NEIGHBOURING AREA FOR 23 February 2026:** Isolated rain or thundershowers. Degree of certainty is 80 per cent.

**FORECAST FOR YANGON AND NEIGHBOURING AREA FOR 23 February 2026:** Isolated rain or thundershowers. Degree of certainty is 80 per cent.

**FORECAST FOR MANDALAY AND NEIGHBOURING AREA FOR 23 February 2026:** Partly cloudy. — DMH

# NATIONAL

## Residents Urged to Prioritize Public Safety Amid Armed Terrorist Threats

ARMED terrorists have been launching attacks by using residential homes and administrative buildings in towns and villages as cover, where they have forcibly settled. They aim to shield themselves from Tatmadaw counterattacks while also persuading temporarily displaced persons to return to their native areas and recruiting new members. That enables terrorists to use civilians as human shields. Tatmadaw is committed to safeguarding the sovereignty of the State and will respond to these threats based on intelligence and prevailing conditions. Therefore, residents in areas where terrorists have taken control must prioritize their safety and protect themselves from being exploited by these groups.

*(An excerpt from guidance given by Chairman of the State Administration Council, Prime Minister Senior General Min Aung Hlaing to Shan State cabinet members and state-level departmental officials on 3 September 2024)*

## 1,620 tonnes of rice donated by Republic of Korea handed over to Mandalay Region government



The hand over ceremony of 1,620 tonnes of rice donated by the Republic of Korea under APTERR programme in progress yesterday.

THE hand over ceremony of 1,620 tonnes of rice donated by the Republic of Korea under the ASEAN Plus Three Emergency Rice Reserve-APTERR Programme-3 (2025) to support the earthquake-affected people from Mandalay Region through the Department of Agriculture took place at the regional Agriculture Department in Chanmyathazi Township yesterday morning.

Mandalay Region Chief Minister U Myo Aung spoke on the occasion while the general manager of APTERR Secretariat and the official from the Embassy of the Republic of Korea to Myanmar explained the purpose of donations.

The Deputy Director-Gener-

al of the Department of Agriculture handed over 1,620 tonnes of rice donated by Korea under the APTERR programme to the regional chief minister. The general manager of APTERR Secretariat and the official of Korean Embassy to Myanmar presented rice to earthquake-affected people.

The chief minister of the region presented certificates of appreciation to the general manager of APTERR Secretariat and an official from the Korean Embassy. An earthquake-affected civilian spoke words of thanks. It was reported that 1,620 tonnes of donated rice will be distributed to districts and townships in Mandalay Region systematically.

— MNA/TTA

## Opening ceremony of Myanmar-Korean drama series "All Pass" held

THE opening ceremony of the first Myanmar-Korean youth drama series "All Pass" was held in conjunction with media gathering yesterday morning at the southwest corner of the Shwedagon Pagoda.

The ceremony was attended by officials from Myanma Radio and Television (MRTV), officials from Korea's KK Media, Korean director Mr Shim Ki Won and his assistant directing team, Korean-Myanmar actors participating in the series, and other film technical experts.

The drama was produced to celebrate the 50<sup>th</sup> anniversary of diplomatic relations between Korea and Myanmar, promote

cultural exchange, and inspire young audiences. Young actors from both countries were carefully selected, and filming will take place in Korea and Myanmar.

The casting of Myanmar actors for the series was conducted by a Korean directing team through three auditions in October 2025, and January and February 2026. The auditions included participants who had appeared as receptionists at the Myanmar Film Academy Awards, such as Lin Let Khun Cho, Pyae Sone, Si Sam Kyaw Zaw, Mae Chit Thet, Thurain Min Khant, and Phyho Han Kyaw, as well as staff artistes from



The opening ceremony of the first Myanmar-Korean youth drama series "All Pass" in progress at the Shwedagon Pagoda yesterday.

MRTV, including Eaindra Soe San, Kyaw Thet Aung, Yazar Aung, and Mya Nanda.

A similar audition was held in Korea on 24 September 2025, with a total of 80 young men and women competing. Famous Korean actors who have appeared

in numerous TV series, including Mo Gun-hoo, Park San-ha, and Cho Chan-hyung, were chosen as the main actors, while Song Jung-hwan, Jang Eun-young, Lee Je-na, Cho Won-hyung, Yoo Jun-hyuk, and Lee Si-yoon were selected through the audition

process.

The series will be co-produced by MRTV and Korea's KK Media Co Ltd with production scheduled for completion and broadcast in March 2026. It will air on MRTV and on IHQ in Korea. — MNA/TH

# NATIONAL

## Kachin State Chief Minister supports displaced families in Myitkyina

THE Kachin State Government continues to provide assistance to people temporarily displaced by the regional security situation and currently sheltering in Myitkyina.

At 1 pm yesterday, Kachin State Chief Minister U Khet Htein Nan encouraged displaced families at the Swat Ngai Taw temporary displaced camp and at Thidaaye Monastery in Myitkyina.

The Chief Minister, accompanied by state ministers and departmental officials, visited the Swat Ngai Taw temporary displaced camp in Sitapu Ward. He met 110 households from Shrawkha Village, Hpakan Township, who are taking temporary refuge at the camp.

During the meeting, the camp in-charge explained the

families' needs related to accommodation and daily living. The Chief Minister urged the households not to lose morale and to stay strong, saying the Kachin State Government is providing continuous support for living and food supply. He added that the Union Government provides a monthly allowance of K20,000 per person.

The Chief Minister then provided K5.5 million for the purchase of 500 bamboo poles and K4.8 million for 12 rolls of tarpaulin to help repair and construct temporary shelters, totalling K10.3 million.

Next, he visited Thidaaye Monastery in Sitapu Ward, where five displaced households from Inlay and Talaugyi villages, Waingmaw Township are staying.

He met the families and co-



Kachin State Chief Minister U Khet Htein Nan presents cash to displaced families for purchase of essential house-building materials in Myitkyina yesterday. **PHOTO: KACHIN STATE IPRD**

ordinated with relevant officials to ensure healthcare services, including medical check-ups and

medical supplies. He also provided K1.1 million for the purchase of bamboo and tarpaulin sheets

to enable shelter repairs before the rainy season. — Kachin State IPRD/KZL

## Ceremony held in Hmawby to heartily honour victorious Tatmadaw members

THE honouring ceremony for the brave Tatmadaw members who fought fiercely and achieved victories against the PDF terrorist groups in Mada, Singu and Thabaikkyin townships, Mandalay Region, was held yesterday afternoon at the local battalion in Hmawby Township, Yangon Region. The ceremony was attended by officials from Hmawby station, as well as departmental officials, students, artistes, and residents.

To ensure that people in each region and state can live and work in peace, and to safeguard their lives, homes, and property, as well as to maintain national stability and peace



Images show Tatmadaw's triumphant troops being warmly welcomed back at the local battalion in Hmawby, Yangon.

in the region, victorious Tatmadaw members have served tirelessly day and night on the front lines. Officials from Hmawby station, along with

departmental officials and residents, welcomed back the victorious Tatmadaw members with sprigs of Eugenia, garlands, and floral tributes. The

joyous celebration featured the band and a pom-pom dance troupe, as well as the beating of traditional drums, the playing of musical instruments,

and lively dances. An official from Hmawby station presented cash awards to the victorious Tatmadaw members. — MNA/KZL

Global NEW LIGHT of MYANMAR

www.gnlm.com.mm



### CIRCULATION & DISTRIBUTION

(+95) (01) 8604532,  
Hotline - 09 255597511

### ADVERTISING & MARKETING

(+95) (01) 8604530,  
Hotline - 09 251022355  
marketing@gnlm.com.mm  
subscription@gnlm.com.mm

Printed and published at the Global New Light of Myanmar Printing Factory at No.150, Nga Htat Kyee Pagoda Road, Bahan Township, Yangon, by the Global New Light of Myanmar Daily under Printing Permit No. 00510 and Publishing Permit No. 00629.  
[gnlmnews@gmail.com](mailto:gnlmnews@gmail.com),  
[newsroom@gnlm.com.mm](mailto:newsroom@gnlm.com.mm)  
[www.gnlm.com.mm](http://www.gnlm.com.mm)

### Write for us

We appreciate your feedback and contributions. If you have any comments or would like to submit editorials, analyses or reports please email [aungthuya@gnlm.com.mm](mailto:aungthuya@gnlm.com.mm) with your name and title.

Due to limitation of space we are only able to publish "Letter to the Editor" that do not exceed 500 words. Should you submit a text longer than 500 words please be aware that your letter will be edited.

# NATIONAL

## Sedawgyi Dam to supply water for over 73,000 acres of summer crops in 2025-2026 FY



Photo depicts thriving paddy plantation that are being supplied by irrigated water of the Sedawgyi dam. **PHOTO: MIN HTET AUNG (MDY SUB-PRINTING HOUSE)**

WATER for the 73,803 acres of summer paddy and other summer crops planned for the water intake area of the Sedawgyi Dam in 2025-2026 financial year has been fully stored in the dam and is now being supplied to farmers for cultivation, according to the Mandalay Region Irrigation and Water Utilization Management Department.

U Myo Min Thant, Assistant Director of the Mandalay Region Irrigation and Water Utilization Management Department, said that four townships within the catchment area of the Sedawgyi dam are being supplied with water for the cultivation of summer paddy and other summer crops. Since the third week of February, water has been supplied to the 73,803 acres planned

for planting, and so far, 5,466 acres of summer paddy have been planted.

“The dam is providing abundant water to farmers planting summer paddy and other summer crops. To ensure that they have a reliable water supply for cultivation this season, we have posted signboards along canals in Patheingyi, Madaya, and Amarapura townships from the third week of this month, informing farmers that water from the dam will be available until summer paddy planting is complete. To date, a total of 5,466 acres of paddy have been planted in Madaya and Patheingyi townships. The Department of Irrigation and Water Utilization Management is carrying out timely canal repairs and cleaning to support continued planting and

achieve the target acreage,” he said.

The acreages of summer paddy and other summer crops within the irrigated area of the dam are 44,904 acres of summer paddy and 295 acres of summer sesame in Madaya Township; 19,029 acres of summer paddy and 239 acres of summer sesame in Patheingyi Township; 6,178 acres of summer paddy and 3,114 acres of summer sesame in Amarapura Township; and 44 acres of summer paddy in Pyigyidagun Township, totalling 73,803 acres of summer paddy and other summer crops. Today, the dam’s water level is RL-418.3 feet, with a storage capacity of 353,820 acre-feet and a usable water capacity of 326,720 acre-feet. — Min Htet Aung (Mdy Sub-printing House)/TH

## 30-day fisheries research launched off Taninthayi ...

### FROM PAGE 1

Economic Affairs of Taninthayi Region, stated that the research would enable scientific assessment of environmental conditions along the Taninthayi coast, including the chemical and physical properties of seawater; the presence of phytoplankton and zooplankton, fish eggs and larvae, and the status of fishery resources. He noted that the findings would facilitate more precise conservation measures and significantly support fisheries management and conservation efforts in the region.

Subsequently, U Myint Zin Htoo, Director-General of the Department of Fisheries, explained the objectives of the fisheries research activities, previous research conducted in Myanmar waters, the planned research agenda, and the anticipated benefits and expected outcomes. Mr Nakaret Yasuk, a research scientist aboard MV SEAFDEC 2, then spoke about the research mission. The president of the Taninthayi Region Fisheries Federation, U Hla Than, delivered a welcome address.

Following this, commemorative gifts marking the joint research collaboration between Thai and Myanmar scientists aboard MV SEAFDEC 2 were presented by the Director-General of the Department of Fisheries and accepted, on behalf of the regional government, by the Minister for Economic Affairs, the president of the federation, and the vessel’s captain. Attendees were then invited aboard the research vessel, where the captain and local cruise leaders provided explanations and briefings.

Through this fisheries research programme, studies will be conducted on the distribution of fish species in the Taninthayi coastal waters according to fishing grounds, species and size. Catch per unit effort (CPUE) will be calculated on an hourly basis, enabling improved regulation and supervision of fishing vessels according to gear type. The research will also examine fish reproductive maturity, stock recruitment, and the food chain system by studying phytoplankton, zooplankton, fish eggs and spawning seasons. These findings will allow for the designation and protection of spawning seasons by species and locality. In addition, the types and quantities of marine debris will be assessed, enabling cooperation with relevant ministries to implement coastal waste management plans. Overall, the programme is expected to promote the sustainable and efficient utilisation of fishery resources and contribute to improving the socioeconomic conditions of those engaged in the fisheries sector.

The research activities will be conducted from 22 February to 22 March in the waters off the Taninthayi coast. The team will comprise five international experts, 12 specialists from the Department of Fisheries, Myeik University, Mawlamyine University and Tatmadaw (Navy), together with 16 crew members of the research vessel. — Khaing Htoo (IPRD)/KNN

### Public Notice

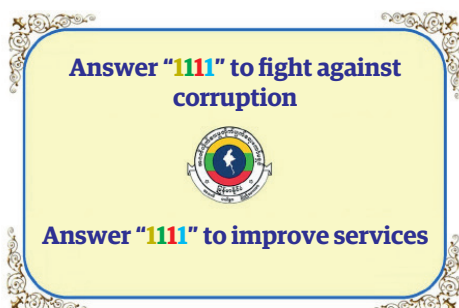
THE Anti-Corruption Commission has established corruption prevention units within ministries to curb corruption effectively.

The ACC used SMS on mobile phones to ask the public who sought services at an office of the department of the relevant ministries via short code No “1111” for feedback, including the public feedback programme (PFP).

According to the PFP, the proper replies of the citizens via short code No “1111” will provide the quality of services of each department and the requirements for corruption prevention to be fixed.

Therefore, the public should reply to the questions of the ACC and corruption prevention units of the ministries via SMS at short code “1111”. Such doing is a supportive measure for PFP, and the people are urged to cooperate in the operations.

*Anti-Corruption Commission*



# NATIONAL

## Illegal goods, foodstuffs, electronics, unregistered motorbikes and vehicles seized nationwide



Officials inspect seized timber in Bago Region.

UNDER the supervision of the Illegal Trade Eradication Steering Committee, relevant departments are taking effective action in accordance with the law to prevent and suppress illegal trade across the country.

A combined inspection team under the management of the Illegal Trade Eradication Task Force conducted inspections on 10 and 15 February. The team seized illegal teak and other timbers worth K9.676 million in Lewe, Tatkon and Ottarathiri townships. The authorities took action under the Forest Law.

In Bago and Mandalay Region, the joint on-duty teams

conducted the inspections on 10, 13 and 16 February and confiscated six unregistered motorbikes valued at K1.38 million in Pyay, Nyaunglebin and Bago districts, illegal teak, hardwoods and other timbers valued at K29.783 million in Okpo, Yedashe, Gyobingauk, Pyu and Bago townships, nine unregistered vehicles valued at K114.5 million in Myitnge, Amarapura, Patheingyi, Mahaangmyay, Chanmyathazi and Thazi townships. The action was taken under the Forest Law and the Export and Import Law.

Moreover, the inspections were conducted on 17 and 18

February and captured three unregistered vehicles worth K44 million in Mudon, Kyaihto and Mawlamyine, three trucks (approximately K114 million) carrying foodstuffs and electronics valued at K202.55 million without official documents in Bilin Township and foodstuffs valued at K10.368 million that were piled up at the railway station in Theinzayet. The action was carried out under the Export/Import Law.

On 10, 13, 15, 16, 17 and 18 February, a total of 41 cases were seized nationwide, with a combined estimated value of K526.258 million. — MNA/MKKS

## Novotel to host Study Abroad Beyond Education, Migration and Scholarship Fair 2026

THE Study Abroad Beyond Education, Migration and Scholarship Fair 2026, jointly organized by the Information Hub of Myanmar and the IHM International College, will be held at the Novotel Hotel in Kamayut Township, Yangon Region, from 1 pm to 4 pm on 1 March.

The fair aims to share educational opportunities with Myanmar students, connect them with international universities, and further develop Myanmar's education sector.

The fair will feature universities and colleges from many countries, including the UK, Germany, Spain, Switzerland, Malaysia, Thailand, and Singapore, offering scholarship opportunities. The entry requirements for applying to these institutions will be discussed in detail.

In addition, IHM education counsellors will provide free Career and Scholarship Preparation Workshops for visitors. — ASH/MKKS



Students, along with parents, are seen discussing educational opportunities at the previous event.

## Effective actions follow against fake citizenship scrutiny card paid services, embassy warns

IF paid services for making fake citizenship scrutiny card are found out, effective actions will be followed, said the Myanmar Embassy to Singapore.

The Embassy of Myanmar has provided consular services such as passport extension and approval issuance for the good of Myanmar nationals living in Singapore in compliance with official procedure, it said.

However, the embassy says it has now witnessed counterfeit citizenship scrutiny cards in passport extension applications and found out that a woman in Singapore has been providing the imitation service via her TikTok account for a fee.

It urged Myanmar nationals not to do such illegal service and do not cheat one another among Myanmar nationals. It added that if fake ID cards are found in applications for approval of renunciation of citizenship, the embassy won't issue the approval but report to Singapore Immigration and Checkpoints Authority (ICA). — MT/ZS



A local bank warns against making fake citizenship scrutiny card.

## Bago Region to establish Agricultural Machinery Entrepreneurs Association to boost domestic production

ACCORDING to the Bago Region Government, plans are under way to establish an association of agricultural machinery entrepreneurs in Bago Region.

The initiative aims to promote the development and production of domestically manufactured agricultural machinery as a substitute for imports, enhance access

to technology and capital investment, and enables the production of machinery ranging from small- and medium-scale equipment to heavy agricultural machinery.

In order to advance the production of locally manufactured agricultural machinery, the Bago Region Agricultural Machinery Entrepreneurs

Association will collaborate with the Myanmar Agricultural Machinery Entrepreneurs Association. The Bago Region Government will make the necessary arrangements to support the production of agricultural machinery of all sizes, from small and medium to large-scale equipment.

In addition, the regional government will provide comprehensive assistance to agricultural machinery manufacturers, including the necessary technology, capital investment and other requirements.

At the Union-level MSME Products Exhibition and Market Fair recently held in Nay Pyi Taw, agricultural machinery produced in Bago Region was purchased by various regions and states for a total exceeding K571.8 million. — ASH/KNN



A demonstration explaining the use of selected domestically manufactured agricultural machinery.

# NATIONAL

## Ayeyawady salt farming thrives as profitability draws more producers

THE number of salt farms has grown in Ayeyawady Region this year and farmers have enjoyed making more income with better price, a salt farmer from the region told The Global New Light of Myanmar.

Last year, salt farms covered just more than 18,700 acres in the region, but applications for the farming licence have been filed for about 19,320 acres this year, he said, adding that the operations of the salt farms have been started since October.

“The coarse salt price has been high now so it mainly encourages people to do the salt manufacturing. This year, there are applications for



Salt farmers in Ayeyawady Region.

the farming licence for about 19,320 acres, relatively larger

than last year,” he said.

The first salt production

was available in January this year and the price of coarse

salt was around K700 a viss. At present, the price per viss of coarse salt is K625 and refined salt is K1,200, higher than the same period last year.

“In January and February last year, the coarse salt price was around K160 a viss so there is a big gap to compare with this year’s price. Even now, when the production has increased, it has still received more than K600 a viss, mainly driven by low supply of the remaining stock of the last year’s production,” he added.

While the current prices have helped farmers make profits, farmers have had to pay higher daily wage due to the labour shortages. — MT/ZS

## 80 Myanmar women workers granted OWIC and overseas job training



A file photo shows Myanmar male workers were at the airport in 2025.

A total of 80 Myanmar women workers, going to work in Japan under the management of overseas employment agencies, have been allowed to attend the overseas job training course and apply the Overseas Worker Identification Card, said the Safe Migration under

the Ministry of Labour on 18 February.

According to the announcement, the women workers will need to attend the job training course on 20 February and apply the OWIC on 21 February, and they will need to resubmit if they are unable

to do by the schedule, it said.

Agencies will need to resubmit Excel soft copy of list of sending workers, copy of passport and copy of OWIC in a week from the departure date, to the Department of Labour, dolmigrationjapan@gmail.com. — MT/ZS

## Upfront charges for Myanmar seafarers reach up to US\$7,000

SOURCES within the seafaring community report that Myanmar sailors are currently paying up to US\$7,000 in service fees to job recruiters to secure a position on ships.

Lately, interest in seafaring careers has surged among young people, but those who do not meet the required qualifications are increasingly resorting to paying fees to find a job.

“The majority of youths do not meet the qualifications required by employers. So, brokers ask for fees. So, the practice of paying for a job has become quite obvious. When recruiters see an influx of people willing to

pay, they hike the prices, which have reached between \$2,000 to \$7,000,” said Captain Soe Min Aung, president of the Myanmar Seafarers Federation.

Despite paying these fees, some sailors face significant losses, such as being assigned to the wrong ships, different titles, and other irrelevant jobs.

Captain Soe Min Aung expressed a desire to see these illegal recruitment practices eliminated and urged relevant departments to take legal action. He added that if seafarers focus on learning the skills required, they will find more employment opportunities. — MT/ZN



Captain Soe Min Aung, president of the Myanmar Seafarers Federation.

### Ministry of Social Welfare, Relief and Resettlement Department of Rehabilitation

Information Centre for Trafficked Persons (Yangon, Mandalay)

Yangon ☎ 01 8666619

Mandalay ☎ 02 2830423

**Yangon address**  
64, Kaba Aye Pagoda Road, Mayangon Township

**The trafficked persons can contact and ask for help.**

**Mandalay address**  
Near Shwegyin Than Lan, Boetawtoe Ward, Aungmyaythazan Township.

# OPINION

## Create safe and healthy workplaces for employees

**AT PRESENT**, as industrial and manufacturing sectors continue to develop worldwide, ensuring occupational safety in workplaces that employ large numbers of workers has become an important process. In Myanmar, some factories and workplaces that rely on large labour forces remain significantly below international standards, as evidenced by workplace safety reports and information concerning occupational accidents.

Workplace hazards take various forms, including unexpected injuries during operational procedures; outbreaks of diseases and other health problems caused by machinery operation; and the side effects of exposure to materials and chemicals, including toxic, explosive, and hazardous substances and equipment. Additional risks include extreme heat from machinery, poor ventilation, infectious diseases and pandemics, unsanitary working conditions, threats from wild animals, natural disasters, and man-made incidents such as riots and armed conflicts.

Although workplace accidents can result from various factors, both employers and employees generally show weaknesses in adhering to worksite safety rules and regulations. Moreover, some officials fail to provide adequate supervision for worksite safety. In addition, employees often ignore relevant worksite disciplines and restrictions. Consequently, the failure of some employees to follow safety protocols can compromise the health and safety of other workers.

subsequently, the failure of some employees to follow safety protocols can compromise the health and safety of other workers.

All employers are responsible for preventing deaths and injuries in the workplace. Governments must provide the necessary infrastructure, including laws and services, to ensure that workers remain employable and that enterprises thrive, thereby promoting safe workplaces. At the same time, employers must prioritize the creation of safe and healthy working environments. Employees are responsible for working safely, protecting themselves, avoiding actions that endanger others, knowing their rights, and participating in the implementation of preventive measures. As such, authorities, employers and employees have to join hands in operating safe and sound workplaces to save the lives and limbs of employees and their families. In this way, safe and healthy workplaces contribute to the socioeconomic well-being of employees.

Injuries and illnesses in the workplace can cause losses not only to employees and their families but also to the affected organizations. Various types of workplace hazards, including machinery operation, chemical use, electronic equipment, exposure to intense light, noise and vibrations, fires, chemical explosions, and gas leaks, can result in significant financial losses and endanger the lives of workers. The International Labour Organization reports that approximately 2.9 million employees, both female and male, lose their lives each year worldwide, while around 395 million workers suffer injuries from workplace incidents annually.

Although workplace accidents can result from various factors, both employers and employees generally show weaknesses in adhering to worksite safety rules and regulations. Moreover, some officials fail to provide adequate supervision for worksite safety. In addition, employees often ignore relevant worksite disciplines and restrictions. Consequently, the failure of some employees to follow safety protocols can compromise the health and safety of other workers.

# Hydropower to Dispel Darkness and Provide Light for the Nation in the Future

By Lin Lin

**KO PYAE**, who works at a garment factory in Hlinethaya Industrial Zone, had their phone stolen near the Aungzeya Suspension Bridge, which connects Insein and Hlinethaya. Such an incident occurred at about 9 pm when he returned home after his overtime duties at the factory. Due to the darkness at night, he could see two individuals coming towards him in the opposite direction, but he could not remember them clearly. One of the two suddenly held the handle of a bicycle ridden by Ko Pyae. As riding the bicycle was out of control for a while, another person snatched a mobile phone from the hand of Ko Pyae. As such, the bicycle fell over. Because the two sides were uneven in strength, all Ko Pyae could do was shout, asking why they took his phone. The two thieves ran toward the suspension bridge, but Ko Pyae could not pursue them.

Ko Pyae's mother remarked, "If there were a proper electricity supply, this wouldn't have happened. Even now, the power is out. Because it's dark, it gives people who do bad things an opportunity. Fortunately, the two snatchers did not attack his son." From then on, no matter what happens, Ko Pyae does not work extra time. In some neighbourhoods of Yangon, the power outage at night forces people to rely on the light from their mobile phones. This situation creates opportunities for wrongdoers, thieves, and criminals to commit theft. Not only in Yangon but also in other major cities, including Mandalay, darkness at night gives criminals the chance to commit bad deeds. They break the law without fear, committing theft, robbery, and even murder.

"Everyone needs to take care when going outside at night. Some criminals commit

robbery openly. Those robbers not only take property but also harm the victims. I have experienced a case where a victim was struck on the head in an attempt to kill him. Fortunately, he escaped death. But his motorcycle was taken," said a resident of Mandalay.

People like Ko Pyae, who are unavoidably travelling at night, are suffering from the disadvantages of insufficient electrification. Lighting along the routes reduces the fear and worries of people with mental health issues. Street lighting prevents wrongdoers and criminals from taking advantage of darkness to break the law. Under the light, their movements can be easily seen, reducing the opportunity for them to commit crimes.

Electricity is an essential infrastructure for the daily routine of the people and their education, healthcare and economic sectors. Only then will the supply of electricity help operate industries at full capacity and the productivity improve. Consequently, electricity can benefit the socioeconomic life of the people and the development of relevant regions.

When the urban lifestyle improves, newer electronic equipment flows into the market day by day. On the other hand, the electricity consumption of the people exceeds the generating capacity of the energy, causing a high electricity demand. As such, it remains a challenge in electrifying houses and roads and fully meeting the power needs required to maintain the productivity of factories and industries.

The government is urging people to follow electricity-saving methods to help meet the nation's power needs. In addition to conservation measures, efforts are also being made to explore both short- and long-



“Electricity is an essential infrastructure for the daily routine of the people and their education, healthcare and economic sectors. Only then will the supply of electricity help operate industries at full capacity and the productivity improve. Consequently, electricity can benefit the socioeconomic life of the people and the development of relevant regions.”

term ways to increase electricity production.

The majority of countries across the world manage to

generate electricity from nuclear, hydropower, natural gas, coal, solar energy, wind power, biofuel, tidal power, geothermal

energy and other waste. As no two countries can be similar in strong and weak points, every country needs to utilize the necessary resources suitable for it.

No matter what energy source is used, there are always both advantages and disadvantages. No electricity generation brings only benefits without any harm. However, by carefully considering factors such as energy efficiency, the natural environment, and economic impacts, and with the advancement of modern technology, efforts can be made to maximize benefits while minimizing negative effects.

Rivers and creeks, hilly areas and heavy rainfalls in Myanmar are wonderful resources to implement hydropower projects.

Myanmar possesses great potential for generating hydropower. So, the country ranks 14th worldwide in terms of abundant hydropower resources. It is necessary to manage the comprehensive utilization of such an advantage, and if Myanmar effectively utilizes hydropower, it could meet the country's current electricity demand while also generating foreign exchange through the energy sector.

Main arteries of Myanmar — the Ayeyawady, the Chindwin, the Thanlwin and the Sittoung rivers — are primary sources to generate hydropower. In fact, hydropower is one of the renewable energies. Due to minimizing carbon emissions, hydropower is an environmentally friendly way to generate energy.

As for Myanmar, although initial agreements were made to develop hydropower, various factors have delayed the continued implementation of these projects. According to assessments conducted in 2005, it was estimated that hydropower resources could generate around 45,000 megawatts. However, due to various reasons, actual production has not yet reached this potential, with current output achieving only slightly over seven per cent of the projected capacity.

Based on observations, the

“Main arteries of Myanmar — the Ayeyawady, the Chindwin, the Thanlwin and the Sittoung rivers — are primary sources to generate hydropower. In fact, hydropower is one of the renewable energies. Due to minimizing carbon emissions, hydropower is an environmentally friendly way to generate energy.”

Shwesaryay hydropower project and Htamanthi hydropower project will be implemented on the Chindwin River, the Tahsan hydropower project on the Thanlwin River and the Myitson hydropower project on the Ayeyawady River. It was assessed that the hydropower project, located far upstream on the Ayeyawady River, 23 miles (37 kilometres) from Myitkyina in Kachin State, is expected to meet the electricity demand of the growing population in the future. China is prepared to implement the construction of eight dams, including Chipwenge dam, generating 99 megawatts, which can be provided for the construction of seven reservoirs and seven dams at the confluence of the N'Maikha (Maykha) and Malikha rivers, where the

while moving around can now be overcome. With the support of advanced technology, standards for environmental protection, social and community impacts, potential losses of water resources, and long-term sustainability based on the projects have all been carefully considered. For these reasons, there is no longer any justification for Myanmar's lifeline, the Ayeyawady River; to be neglected or left at risk.

The public understands that the hydropower projects halted for various reasons are the main cause of insufficient electricity. Looking to the future, they hope that these projects will bring light, benefiting Myanmar and all ethnic communities across the country.

Ayeyawady River originates, and tributary rivers to generate some 20,000 megawatts.

SPIC stated that the largest project can generate 6,000 megawatts, the Laiza (Maliyang) project 2,800 megawatts, the Chipwe project 3,400 megawatts, the Usauk project 2,500 megawatts, the Phisau project 2,400 megawatts, the Khaunglanphu project 3,000 megawatts, the Rinan project 1,400 megawatts, totalling more than 20,000 megawatts. Upon completion, these projects will help Myanmar and its people expect a 100 per-cent-electricity supply across the nation in 2030. If so, based on hydropower resources, a strong energy sector can be established in the future to support economic growth and development.

Whether employees are returning home late at night or have to travel out of necessity, the anxiety caused by darkness

Translated.

# DELICACY/NATIONAL

## Pone Yay Gyi (Fermented Bean Paste)

For this week's regional dish, we have chosen a speciality from Upper Myanmar that is well known for enhancing the appetite whenever it accompanies a meal. Although it originates from the Upper Dry Zone, it is also widely enjoyed by people in Lower Myanmar. This beloved dish is Pone Yay Gyi.

Pone Yay Gyi is produced in towns such as Bagan, NyaungU, Sale, and Myingyan, and distributed nationwide. Around the Bagan area, its production is a well-known home-based cottage industry with a long-standing reputation.

Made from horse gram, Pone Yay Gyi is not only flavourful and versatile but also rich in protein, lecithin, antioxidants, vitamins, and minerals, making it beneficial to health. In the traditional treatise Utu Bawzana Kyan by the Myanmar scholar Yaw Atwinwun (Minister) U Bo Hlaing, it is stated:

"Pone Yay softens the stomach, whets the appetite, aids digestion, and relieves flatulence."

For this week, we present the method of preparing and serving Pone Yay Gyi.

### Ingredients

- Horse gram – 1 kilogramme
- Salt – 1 teaspoon
- Water – as required

### Preparation Method

1. Wash the beans thoroughly two or three times with plenty of water.
2. Place them in a bowl, add sufficient water, and soak overnight.
3. The next day, drain the soaking water and transfer the beans to a deep pot.
4. Add enough water to submerge the beans and boil.
5. Stir occasionally to ensure even cooking.
6. Check for tenderness; if not soft, add more water and continue boiling until tender.
7. Once soft, add salt and stir well.
8. Strain the boiled beans, reserving both the beans and the liquid.
9. Mash or grind the beans through a fine sieve to obtain a smooth paste.
10. Combine the bean paste with the reserved liquid in a bowl, seal tightly, and allow it to ferment at room temperature for about three days.
11. When fermentation develops a sour aroma, prepare to cook the paste.
12. Place the fermented mixture in a pot, add some water if necessary, and cook over moderate heat.
13. Stir patiently until the mixture thickens.

When the liquid reduces, and the paste becomes thick with a mildly sour, slightly rich taste, the Pone Yay Gyi is ready.

Since the paste thickens further after cooling, remove it from the heat slightly before reaching the de-



## Traditional Myanmar Cuisine



sired consistency. Transfer it into a clean earthenware or airtight container. (If stored in metal containers, it may darken in colour; therefore, avoid cooking in iron pots if colour preservation is desired.)

High-quality Pone Yay Gyi should not be overly sour. A moderately fermented paste offers a balanced sour and savoury taste. To prevent mould from forming on the surface during storage, pour a thin layer of sesame oil or peanut oil over the top.

### Ways to Enjoy Pone Yay Gyi

**As a salad:** Most commonly mixed fresh and served as a side dish.

**With meat:** Particularly well paired with pork. Add the paste before the pork is fully cooked and simmer gently so the sour-savoury flavour penetrates the meat. The

dish should be cooked until the oil rises and no excess water remains for the best flavour.

**With fish:** Those who avoid pork may cook it with fatty fish such as Mrigal carp (*Cirrhinus mrigala*) or Burmese river catfish (*Hemibagrus nemurus*) for a rich, appetizing dish.

**With noodles:** Adding bean paste to noodle soup creates a Korean-style flavour variation.

**Fried Pone Yay Gyi:** Delicious, long-lasting, and suitable with any curry. It can also be mixed with rice to make a flavourful rice salad.

### Pone Yay Gyi Salad (Common Style)

#### Ingredients

- Pone Yay Gyi – 2 tablespoons
- Onion – 1
- Garlic – 2 cloves
- Green chillies – 2
- Oil – 2 tablespoons
- Salt – to taste
- Dried shrimp powder – 1 teaspoon
- Seasoning powder – optional
- Chilli powder – optional

#### Method

1. Thinly slice the onion, rinse, and drain.
2. Peel and finely slice the garlic.
3. Wash and finely slice the green chillies.
4. Place the Pone Yay Gyi in a bowl.
5. Add the sliced onion, garlic, and chillies.
6. Add oil, dried shrimp powder, salt, chilli powder, and seasoning powder as desired.
7. Mix thoroughly.

You will have a mildly sour, savoury, and appetizing Pone Yay Gyi salad ready to enjoy. — MOON

## 5Traveller opens from 21 Feb

A Group Art Exhibition titled 5Traveller opened on 21 February at Artistic Space Art Gallery in Botahtaung Township, Yangon Region, and will run until 25 February.

The exhibition features works by renowned painters U Ye Myint (Forward), Bo Thaik Oo, Kyi Oo, Win Maung Shwe, and Soe Naing Soe, showcasing a diverse range of watercolour,

oil, acrylic, and charcoal paintings with various themes.

The gallery's curator stated: "The 5Traveller exhibition at the Artistic Space Art Gallery presents a wide array of works

by veteran painters. It opened on 21 February and will continue until 25 February – from 10 am to 5 pm daily. We warmly invite everyone to visit and enjoy the exhibition".

The paintings on display come in various sizes, including 24 by 24 inches, 36 by 24 inches, 18 by 24 inches, and 18 by 18 inches. — ASH/KZL

# St Francis relics go on public show for first time in Italy

*Venerated as Holy Spirit conduits—not macabre—visitors from Italy to Africa flock, boosting the site’s quiet season to record crowds without risking preservation.*

ST Francis of Assisi’s skeleton goes on rare public display in a nitrogen-sealed plexiglass case at his basilica, marking the 800<sup>th</sup> anniversary of his 1226 death and drawing nearly 400,000 global visitors until 22 March.

For the first time in nearly 50 years, the fragile bones of Italy’s patron saint — hidden since 1978 except for brief inspections — are showcased in the Basilica of St Francis, protected by bulletproof glass and 24/7 surveillance. The

Franciscan friar, who renounced wealth to aid the poor, founded his order; his “consumed” remains symbolize total devotion, per friar Giulio Cesareo. Expect daily crowds surging from 1,000-4,000 to 15,000-19,000, with Italy dominant but pilgrims from Brazil, the US, and Africa joining.

Rediscovered secretly in 1818 after transfer to the 1230 basilica, the relics were last shown publicly for one day in 1978. This exhibit revives a 4 October hol-



St Francis of Assisi’s skeleton goes on rare public display in a nitrogen-sealed plexiglass case at his basilica, marking the 800<sup>th</sup> anniversary of his 1226 death and drawing nearly 400,000 global visitors until 22 March. **PHOTO: AFP**

iday scrapped in the 1970s for budget cuts — a nod to late Pope Francis, who adopted the saint’s

name before dying at 88 last year. Veneration of martyr relics, from catacombs to now, honours the

Holy Spirit’s presence, Cesareo explains, not macabre fascination. — AFP

## Int’l brands gallop into hearts of young consumers in Year of the Horse

ACROSS China, international brands are racing to launch Spring Festival collections, from cosmetics and clothing to home decor, an annual marketing drive targeting the world’s second-largest consumer market.

For years, multinational companies have tapped into the 12 Chinese zodiac signs as a marketing strategy for the Chinese market. Today, how-

ever, many are taking a more thoughtful approach, weaving Chinese cultural elements into both product design and brand storytelling as they adapt to a market increasingly shaped by cultural confidence.

The LEGO Group, for example, drew on its Chinese designers to develop its Spring Festival series and sought extensive consumer feedback to better understand the real

needs of Chinese shoppers.

“China is the only market where we design exclusive products for local festivals like Chinese New Year,” said Maciek Selinski, head of LEGO China, in a recent interview with Xinhua. “We conduct in-depth research and will continue to deepen these efforts to explore how China-inspired ideas can resonate globally,” he added. — Xinhua



This image features items from the IKEA FÖSSTA Lunar New Year collection, which includes red lanterns, textiles with horse motifs, and decorative tableware. **PHOTO: PIX FOR VISUAL PURPOSE/IKEA**

### NEWS IN BRIEF

#### Apps replace waterway rendezvous

GANVIE’S “lovers’ channel” in Benin, a narrow waterway in West Africa’s largest lake city, once served as a clandestine rendezvous for young couples evading strict families under darkness. For decades, lovers in dugout canoes exchanged coded signals like whistles and paddle taps, fostering secret romances away from prying eyes—essential when parents forbade outings.

Today, loosening social norms and dating apps render this tradition obsolete. “We talk without hiding,” says 22-year-old student Anna, while farmer Roslin Dantin, 30, deems it “for old people.” Student Augustin Gbenoukpo, 24, credits technology for replacing such symbols. Elise Avlessi, who met her husband there 15 years ago, laments lost intimacy: “We had nowhere else to meet freely.”

Yet nostalgia persists. A nearby “Lovers’ Square” honours the ritual: couples toss cowrie shell vows through a sacred jar into the canal, then pledge fidelity in a consecrated corner blessed by religious leaders. — AFP

#### Dark times under Assad reach Arab screens

DURING Ramadan, Arab television screens are set to feature a bold new drama spotlighting the harsh realities of life under Syrian President Bashar al-Assad.

Produced with the backing of AFP, the series delves into the dark times of Syria’s recent history, portraying repression, fear, and survival in a society marked by authoritarian rule.

The show aims to balance entertainment with social commentary, offering audiences a glimpse into the struggles faced by ordinary Syrians amid political turmoil.

Ramadan dramas traditionally attract massive viewership across the Arab world, making this series particularly impactful. — AFP

# ECONOMY WORLD



US chip giant Nvidia said in December it would create a massive research and development centre in northern Israel. **PHOTO: AFP**

## Battered by Gaza war, Israel's tech sector in recovery mode

*Israel's battered tech sector rebounds post-Gaza war via \$15.6B investments.*

ISRAEL'S tech sector, contributing 17 per cent of GDP, 11.5 per cent of jobs, and 57 per cent of exports, faced severe war disruptions since October 2023, including 15-20 per cent staff reservist call-ups, suspended air travel, frozen investments, and a 2.1 per cent brain drain of 8,300 workers

by mid-2024.

A Gaza ceasefire since October has revived momentum: 2025 private funding hit \$15.6 billion (up from \$12.2 billion in 2024), deep tech returned to pre-2021 peaks, and Nvidia announced a 10,000-employee northern R&D hub. Output stagnated in 2024-

2025 after 13.7 per cent growth in 2023, but PM Netanyahu welcomes nonstop investors. War across fronts spurred innovation: defence startups doubled to 312 (July 2024-April 2025), with 130+ joining ministry R&D — accepting untested products from newcomers, not just giants. — AFP

## Copper, a coveted metal boosting miners

MINING giants BHP, Glencore, and Teck Resources posted sharp 2025 profit surges — BHP up 28 per cent to \$5.64B in H1 — driven by copper prices soaring 40 per cent last year to a January record, fuelled by green energy, EVs, AI data centres, and military needs.

Supply disruptions in Chile, Indonesia, and DRC created shortages amid explosive demand; Trump's tariffs spurred US stockpiling, while US-China tensions boosted buying. BHP leads as top producer via Escondida expansions; Glencore eyes doubling output in a decade; Teck eyes copper mergers despite Anglo American talks faltering post-BHP bid collapse.

Experts predict deficits as energy transition outpaces supply—new mines take 16 years per IEA, deterring investors seeking quick returns. Iron ore/diamond firms like Rio Tinto and Anglo pivot to copper. Prices (\$13K/tonne) lag scarcity signals (\$15K needed for new projects), sustaining gains. — AFP



Copper's 40 per cent price surge propelled BHP, Glencore, and Teck profits amid green/AI demand and mine disruptions, but looming deficits loom as 16-year mine timelines deter investment despite strategic stockpiles. **PHOTO: PIX FOR VUSUAL PURPOSE/ BHP**

## Japan aims for 32% expansion of used-goods market by 2030

THE Japanese government plans to expand the market for used goods to around 4.6 trillion yen (\$29.7 billion) in 2030, up 32 per cent from 2024, to curb waste and reduce carbon dioxide emissions, a government source said.

The government will draw up guidelines by fiscal 2027 to outline requirements for business operators, following cases in which consumers have received poor-quality items via flea market apps. It will also urge local governments to utilize secondhand items, the source said.

The measures to promote used goods will be compiled in a road map to be drawn up by the Environment Ministry as early as March, the source said. — Kyodo

## US major ports seek stability over court ruling against Trump's tariff policy

LEADERS of Southern California's two major seaports and anxious small-business owners are seeking clarity about the future after the US Supreme Court struck down much of President Donald Trump's tariff programme on Friday.

In a 6-3 decision, the court ruled that his tariff policy under the International Emergency Economic Powers Act

was illegal. The ruling is expected to have a significant impact on two of the nation's busiest trade hubs — the Port of Long Beach and the Port of Los Angeles — which together form the largest gateway for international trade in the United States.

Noel Hacegaba, chief executive officer of the Port of Long Beach, said in a statement on Friday that they hope

the "ruling brings greater certainty to the supply chain."

Both ports were heavily affected by trade policies enacted during the Trump administration, particularly tariffs imposed on goods from China and other trading partners, which created ripple effects across nearly every aspect of port operations, from cargo volumes to employment and long-term planning. — Xinhua



This photo taken on 10 May 2025 shows cargo ships loaded with containers at the Port of Los Angeles in California, United States. **PHOTO: QIU CHEN/XINHUA**

### Indigenous protesters occupy Cargill port terminal in Brazil

INDIGENOUS protesters in Brazil occupied a shipping terminal operated by US agricultural giant Cargill on Saturday, demanding a ban on dredging Amazon waterways.

The South American nation is the world's top exporter of soy and maize, and ongoing efforts to upgrade river ports aim to ease transportation.

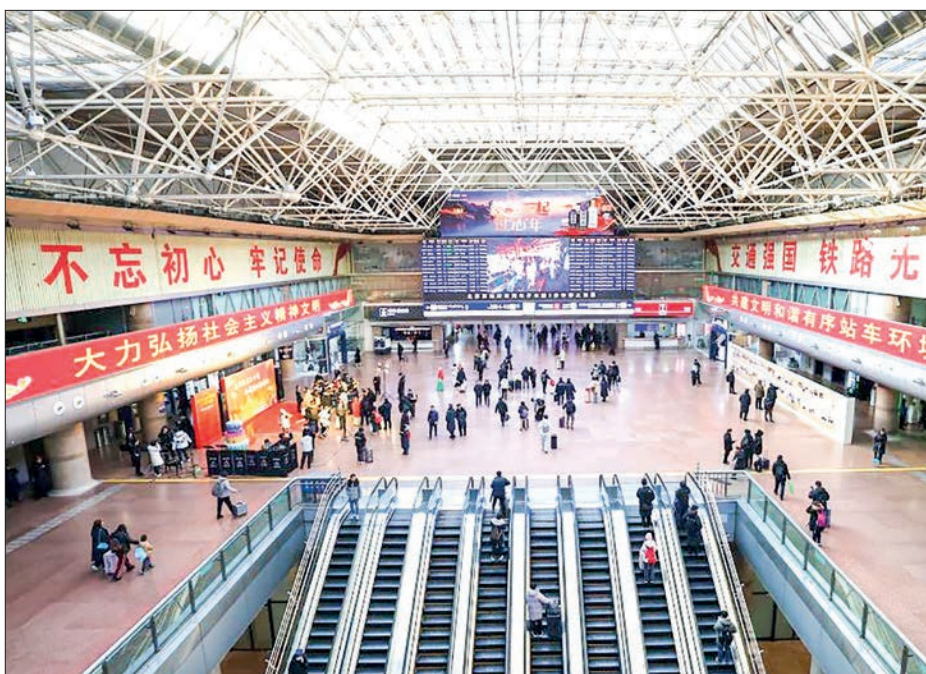
Demonstrators had been gathering outside the terminal in Santarem, in northern Brazil's Para state, for a month before taking over company offices this weekend. — AFP

## China's railways handle 258 mln passenger trips since start of 2026 Spring Festival rush

CHINA'S railways have witnessed 258 million passenger trips so far during the 40-day Spring Festival travel rush this year, as the travel period passed its halfway mark, the national railway operator said on Sunday.

On 21 February the 20<sup>th</sup> day of the 2026 Spring Festival travel season, about 17.19 million passenger trips were recorded, according to China State Railway Group Co, Ltd.

The operator expected the passenger volume to remain high on Sunday, with an estimated 17.93 million trips. A total of 2,203 additional passenger



This photo taken on 21 January 2026 shows an interior view of the Beijing West Railway Station in Beijing, capital of China. PHOTO: ZHANG CHENLIN/XINHUA

trains have been scheduled to meet surging demand.

Railway authorities have increased transport capacity on major routes, enhanced services at stations and onboard trains, and taken further measures to improve the travel experience.

The Spring Festival, also known as the Chinese New Year, fell on 17 February this year. This travel surge, also referred to as chunyun, is often described as the world's largest annual human migration. The 40-day travel period runs from 2 February to 13 March this year. — Xinhua

### Italy's Enel buying US wind, solar plants for \$1bn



US President Donald Trump has repeatedly claimed that renewable energy sources are unreliable and has sought to block new offshore wind projects in the US. PHOTO: ENEL

ITALIAN power giant Enel said Saturday it is buying a "portfolio" of US wind and solar plants with a capacity of 830 megawatts (MW) for around \$1 billion.

It said it was buying the plants, which have an expected average output of around 2.1 TWh (Tera-watt-hours) per year, from Excelsior Energy Capital, a renewable energy fund.

The deal is expected to be completed in the

third quarter of 2026, Enel said in a statement.

The acquisition would bring Enel's installed capacity from renewable sources in North America to around 13 GW, it added.

Enel's renewables arm, Enel Green Power, has a capacity of 68 GW globally, including wind, solar, geothermal and hydroelectric power as well as energy storage facilities. — AFP

### Ka Ying Rising makes Hong Kong racing history with 18<sup>th</sup> win

KA Ying Rising, ridden by Zac Purton, stormed to his 18<sup>th</sup> win in a row on Sunday to break the long-standing Hong Kong record of Silent Witness.

The world's best sprinter made history as he obliterated the 1,400m (seven furlong) track record in the Group One Queen's Silver Jubilee Cup at Sha Tin by more than half a second. "He's the horse of a lifetime," said Purton after coming home a scarcely believable three-and-a-half lengths clear of Helios Express and fellow group One winner Lucky Sweynesse.

"I just pinch myself every time I ride him. He's in a league of his own," jockey Purton said after coming home in a record time of 1min 19.36sec. — AFP

<p><b>CLAIMS DAY NOTICE</b> M.V ALS SUMIRE VOY.NO. (224N/S)</p> <p>Consignees of cargo carried on <b>M.V ALS SUMIRE VOY.NO. (224N/S)</b> are hereby notified that the vessel will be arriving on <b>23-2-2026</b> and cargo will be discharged into the premises of <b>AWPT</b> where it will lie at the consignee's risk and expenses and subject to the byelaws and conditions of the Port of Yangon.</p> <p>Damaged cargo will be surveyed daily from 8 A.M to 11:20 A.M and 12 NOON to 4 P.M to Claim's Day now declared as the third day after final discharge of cargo from the Vessel.</p> <p>No claims against this vessel will be admitted after the Claims Day. Phone No: <b>2301185</b></p> <p style="text-align: right;"><b>Shipping Agency Department</b> <b>Myanma Port Authority</b></p> <p>Agent For: <b>M/S SAMUDERA SHIPPING LINE</b></p>	<p><b>CLAIMS DAY NOTICE</b> M.V TC MESSENGER VOY.NO. (162N)</p> <p>Consignees of cargo carried on <b>M.V TC MESSENGER VOY.NO. (162N)</b> are hereby notified that the vessel will be arriving on <b>23-2-2026</b> and cargo will be discharged into the premises of <b>AWPT</b> where it will lie at the consignee's risk and expenses and subject to the byelaws and conditions of the Port of Yangon.</p> <p>Damaged cargo will be surveyed daily from 8 A.M to 11:20 A.M and 12 NOON to 4 P.M to Claim's Day now declared as the third day after final discharge of cargo from the Vessel.</p> <p>No claims against this vessel will be admitted after the Claims Day. Phone No: <b>2301185</b></p> <p style="text-align: right;"><b>Shipping Agency Department</b> <b>Myanma Port Authority</b></p> <p>Agent For: <b>M/S NEW GOLDEN SEA LINES</b></p>	<p><b>CLAIMS DAY NOTICE</b> M.V AS SUSANNA VOY.NO. (0040N)</p> <p>Consignees of cargo carried on <b>M.V AS SUSANNA VOY.NO. (0040N)</b> are hereby notified that the vessel will be arriving on <b>23-2-2026</b> and cargo will be discharged into the premises of <b>MIP/MITT</b> where it will lie at the consignee's risk and expenses and subject to the byelaws and conditions of the Port of Yangon.</p> <p>Damaged cargo will be surveyed daily from 8 A.M to 11:20 A.M and 12 NOON to 4 P.M to Claim's Day now declared as the third day after final discharge of cargo from the Vessel.</p> <p>No claims against this vessel will be admitted after the Claims Day. Phone No: <b>2301185</b></p> <p style="text-align: right;"><b>Shipping Agency Department</b> <b>Myanma Port Authority</b></p> <p>Agent For: <b>(ONE) OCEAN NETWORK EXPRESS LINE</b></p>
---	---	---

# ROLLING UPDATES WORLD

## Japan to hold int'l conference on plastic pollution

The three-day talks, beginning 1 March, are expected to bring together around 15 countries and regions.



Canadian artist Benjamin Von Wong's sculpture 'The Thinker's Burden', sited outside the UN, is being slowly covered in plastic during the treaty talks in Geneva. PHOTO: AFP

JAPAN is planning to host and mediate an unofficial international conference in Tokyo in March to draft a treaty to minimize plastic pollution, a source familiar with the matter said Saturday.

The talks are slated to run for three days from 1 March and

are expected to draw around 15 countries and regions, including the United States, Saudi Arabia and the European Union.

Previous intergovernmental talks aimed at securing an agreement on a draft treaty by the end of 2024 ran aground as partici-

pants failed to reach a consensus on manufacturing regulations.

The move is intended to explore possible compromises ahead of formal negotiations involving about 180 countries. — Kyodo

### NEWS IN BRIEF

#### NZ marks 15<sup>th</sup> anniv of Christchurch quake

THE New Zealand city of Christchurch on Sunday marked the 15<sup>th</sup> anniversary of the devastating 2011 earthquake that claimed 185 lives and injured thousands.

The victims included 115 who died in the collapse of the six-story Canterbury Television Building when the magnitude-6.3 temblor struck, including 28 Japanese studying English at a language school on the building's third floor.

A memorial service for bereaved families was held at Avonhead Memorial Cemetery on Sunday morning, followed by a public service at the Canterbury Earthquake National Memorial where attendees observed a minute's silence at 12:51 pm to mark the moment the quake struck on 22 February 2011.

Christchurch Mayor Phil Mauer told Kyodo News after the service that the city has learned a lot from the disaster, constructing more earthquake resilient buildings and establishing an Emergency Operations Centre to improve interagency coordination in the event of a future disaster. — Kyodo

#### Japanese startup Space One delays rocket launch to March

SPACE One Co said Sunday it will delay a rocket launch set for Wednesday to March due to weather conditions, as it aims to achieve Japan's first satellite orbital insertion by a private company alone.

The Tokyo-based startup said the March launch date will be set after reviewing weather forecasts.

Space One set a backup window through 25 March for a launch from Space Port Kii, a private launch site in Kushimoto, Wakayama Prefecture.

The Kairos No 3, an 18-metre, 23-ton solid-fuel rocket, is set to carry five satellites. Space One launched its first rocket in March 2024, but it exploded shortly after liftoff, and the company aborted a second launch in December after triggering a self-destruction command. — Kyodo

## Greenland does not need US hospital ship: Danish minister

GREENLAND does not need medical assistance from other countries, Denmark's defence minister said Sunday, after US President Donald Trump claimed he was sending a hospital ship to the autonomous Danish territory that he covets.

"The Greenlandic population receives the healthcare it needs. They receive it either in Greenland, or, if they require specialized treatment, they receive it in Denmark. So it's not as if there's a need for a special healthcare initiative in Greenland," Defence Minister Troels Lund Poulsen told Danish broadcaster DR.

In Greenland as in Denmark access to healthcare is free. There are five regional hospitals across the vast Arctic island, with

the Nuuk hospital serving patients from all over the territory. The Greenlandic local government signed an agreement with Copenhagen in early February to improve the treatment of Greenlandic patients in Danish hospitals.

Trump on Saturday posted on his social media platform Truth Social that "we are going to send a great hospital boat to Greenland to take care of the many people who are sick, and not being taken care of there". Trump has said the US must control Greenland to ensure its security, though he has backed off earlier threats to seize it after striking a "framework" deal with NATO Secretary General Mark Rutte to ensure greater US influence. — AFP



There are five regional hospitals across the vast Arctic island, with the Nuuk hospital serving patients from all over the territory. PHOTO: AFP/FILE

# SPORTS

## Sports competitions planned for 2026-2027 FY

THE Ministry of Sports and Youth Affairs has announced that Inter-State and Region sports competitions and inter-ministry sports meets will be held during the 2026-2027 financial year.

The Inter-State and Region competitions will take place in Yangon, Bago, Patheingyi and Taunggyi, featuring 33 events in 29 sports disciplines.

The inter-ministry competitions will be held in Nay Pyi Taw and Yangon, with seven events in six sports disciplines.

The ministry also said outstanding new-generation athletes will be selected and trained at relevant sports federations and youth camps. — ASH/KZL



Players of some sports disciplines in action at relevant competitions.

## Myanmar Traditional Lethwei Federation opens referee training 1/2026



The ceremony of launching to conduct referee training 1/2026 of Myanmar Traditional Lethwei Federation in progress yesterday.

THE Ministry of Sports and Youth Affairs and the Myanmar Traditional Lethwei Federation jointly conducted the Referee Training Course 1/2026 at 10 am yesterday at Theinbyu Gymnasium in Mingala Taungnyunt Township, Yangon.

At the opening ceremony, the federation's Vice-President U Kyaw Win Tun delivered the opening remarks, and instructors conducted the training

sessions.

"This course will cover refereeing rules and regulations, referees' conduct and demeanour, and the mindset required of officials. An international referee from Japan has also been invited to deliver lectures. The primary objective is to help develop a new generation of referees for Myanmar traditional Lethwei," said the federation's Chief Executive U

Kyaw Zin Oo.

Approximately 30 trainees from various regions and states attended the course. The participants include trainees with prior experience in traditional Lethwei.

The course runs from 22 to 28 February. Upon completion, the trainees will serve as referees at new-generation Lethwei challenges. — Bala/KZL

## German duo Nolte/Levi defend Olympic title in 2-woman bobsled

IN a showdown featuring three pairs of Olympic champions, Laura Nolte and Deborah Levi of Germany retained the title in the two-woman bobsled at the Milan-Cortina Olympic Winter Games here on Saturday.

Nolte and Levi took control from the second run onward and maintained their dominance through the final heat, securing gold with a combined time of three minutes 48.46 seconds.

"It is incredible. I don't

know what to say. We had hard times during the last four years but we fought back, and now we're here winning gold. It's just so crazy that we did it a second time and I don't know what to say. I'm so grateful," Levi said. — Xinhua



Manchester City celebrate during their win over Newcastle. PHOTO: DARREN STAPLES/AFP

## Manchester City beats Newcastle to pressure Arsenal

MANCHESTER City closed Arsenal's lead at the top of the Premier League to just two points ahead of Sunday's North-London derby with a hard-fought 2-1 win at home to Newcastle United.

Nico O'Reilly put Manchester City ahead in the 14th minute with a fizzing low shot and although Lewis Hall equalized for Newcastle with a deflected shot following a corner, O'Reilly's second from an Erling Haaland cross in the 27th minute restored Manchester City's lead.

Aston Villa was frustrated by Leeds United in a 1-1 draw at Villa Park, which saw Anton Stach score an excellent free kick to put the battling visiting side ahead. Leeds clung on until the 89th minute when January arrival Tammy Abraham netted a goal for Aston Villa, whose slim title chances has probably now gone. Chelsea's efforts to finish in the top-four were frustrated by a late goal as Burnley salvaged a 1-1 draw at Stamford Bridge. — Xinhua

## Mkhitaryan, Akanji fire Inter 10 points clear in Serie A

HENRIKH Mkhitaryan's second-half goal helped Inter Milan move 10 points clear at the Serie A summit with a 2-0 win at Lecce on Saturday, while beleaguered Juventus slumped to defeat by Como.

Cristian Chivu's Inter struggled to break down their stubborn hosts but 37-year-old Mkhitaryan and Manuel Akanji

struck late to put the pressure on second-placed AC Milan ahead of their match against Parma on Sunday.

Inter suffered a surprise 3-1 defeat by Norwegians Bodo/Glimt in the Champions League knockout play-off first leg in midweek, but have now won seven successive games in Serie A. — AFP



(LtoR) Atalanta's Italian defender #42 Giorgio Scalvini and Atalanta's Belgian forward #17 Charles De Ketelaere take part in the warm-up ahead of Atalanta's Serie A football match against Napoli at New Balance Arena in Bergamo on 22 February 2026. PHOTO: ISABELLA BONOTTO / AFP



**B**RAZILIAN President Luiz Inacio Lula da Silva on Sunday described his current visit as having a “characteristic that is very special” while recalling how his 2005 trip to India fundamentally reshaped Brazil’s economic strategy.

He highlighted the deep cultural and financial ties between the two nations, noting that India served as the inspiration for Brazil’s massive build-up of international hard currency reserves.

Reflecting on that turning point, President Lula stated, “It was in India in 2005 that, for the very first time, I perceived the importance of having international hard currency reserves. I came here, my first trip, and India had accrued US\$ 100 billion in international hard currency reserves. I came back to Brazil convinced that we needed to build up our international reserves, and we had to have an extra buffer.”

The Brazilian President in his address to the India-Brazil Economic Forum in New Delhi, further explained the long-term impact of that policy shift, noting, “We managed to do that for the very first time. We left that position of debtors of the IMF to the creditors of the IMF. We accrued reserves of international hard currencies of US\$ 360 billion. That was the third or fourth largest international reserve in the world in those days.”

Linking economic cooperation with cultural diplomacy, the President expressed appreciation for the hospitality extended by his Indian hosts, which mirrored a gesture he had earlier arranged for Prime Minister Narendra Modi.

At a state dinner and lunch with PM Modi, Brazilian President Lula was touched by the performance of “Asa Branca” and other Brazilian songs, reciprocating a surprise they arranged for Modi in

## Lula hails India as “Democratic brothers of Global South,” recalling 2005 visit as economic turning point



India’s Prime Minister Narendra Modi (R) holds hands with Brazil’s President Luiz Inacio Lula da Silva as they walk before their meeting at the Hyderabad House in New Delhi. **PHOTO: AFP**

Brazil last year with his favourite song. Lula highlighted this visit as closing a cycle of international trips to restore

Brazil’s global image and negotiation power during his third term. In just over three years, Brazil creat-

ed 520 new markets for its goods, far surpassing past achievements and strengthening its worldwide standing. — ANI

**MORE** than half of the some 6,000 languages spoken in the world today may disappear by the end of the century, the UN cultural organization UNESCO said Tuesday on the occasion of International Mother Language Day.

The day was marked at UNESCO headquarters in Paris by a conference on linguistic diversity focussing on the difficulties of African, Asian and American minorities to preserve their traditional tongues.

“When a language dies it is a vision of the world that disappears,” UNESCO director general Koichiro Matsuura said.

“Language is much more than an instrument, considerably more than a tool. In structuring our thoughts, in coordinating our social relations and in building our relationship with reality, it constitutes a fundamental dimension of

## More than half of world’s languages under threat: UNESCO



the human being,” he said.

Today 72 per cent of Internet sites are in English, followed by German at just seven per cent, and French, Japanese and Spanish on three per cent. Some 90 per cent of the world’s languages are not represented at all on the Internet, UNESCO said. — AFP

Alvdaalen (Övdaln) in Sweden’s Dalarna region is the only remaining community where Elfdalian (Övdalian), a distinct North Germanic language with Old Norse features, is actively spoken by around 2,000-3,000 people—primarily as a first language among adults there.

**PHOTO: GOOGLE MAPS**